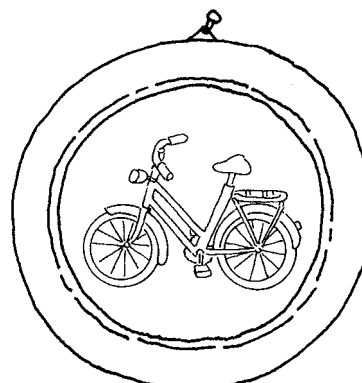
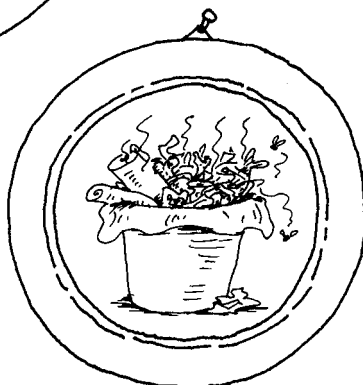
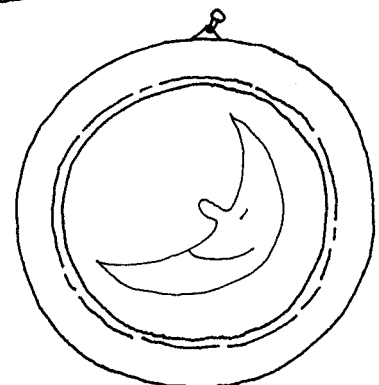
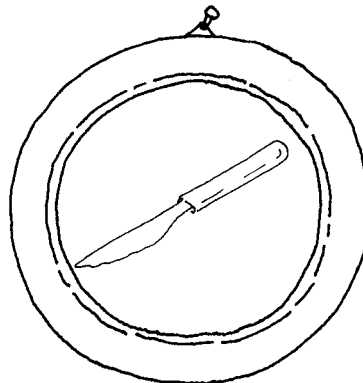
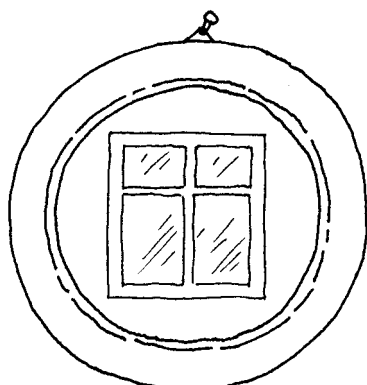
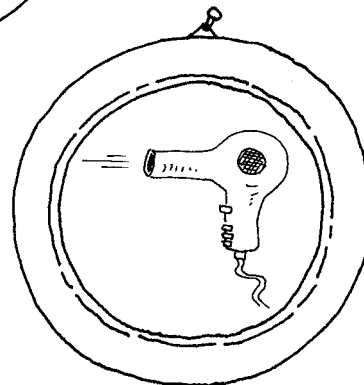
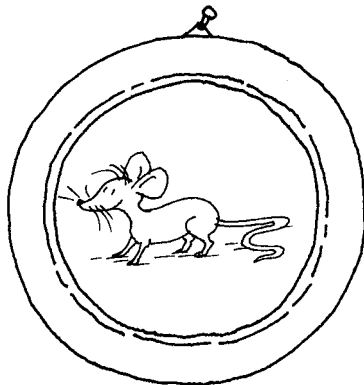
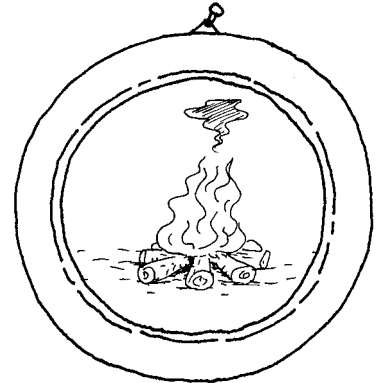
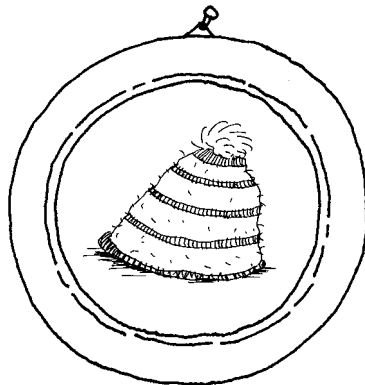
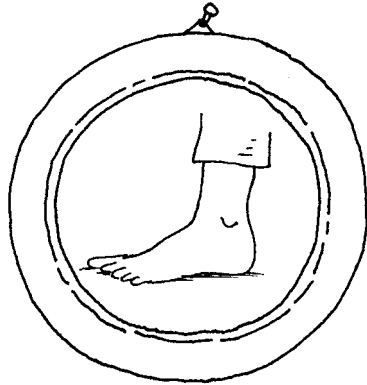


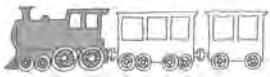
Welche Wörter hören sich am Anfang gleich an?



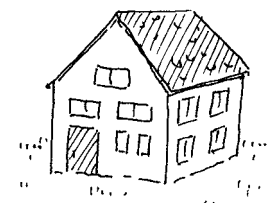
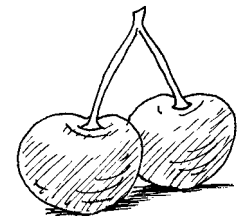
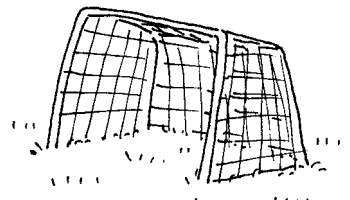
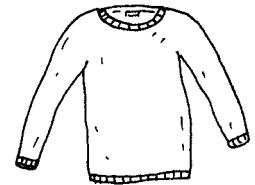
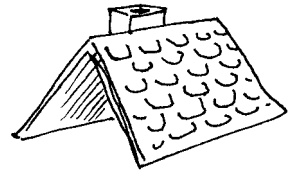
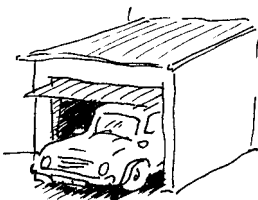
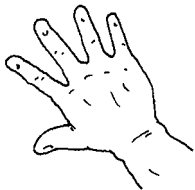
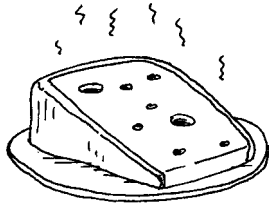
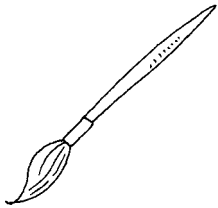
Male die Rahmen in der gleichen Farbe an.

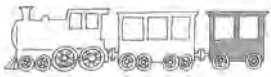


☆ Anlaute F und M



Was hört sich am Anfang gleich an? Verbinde.

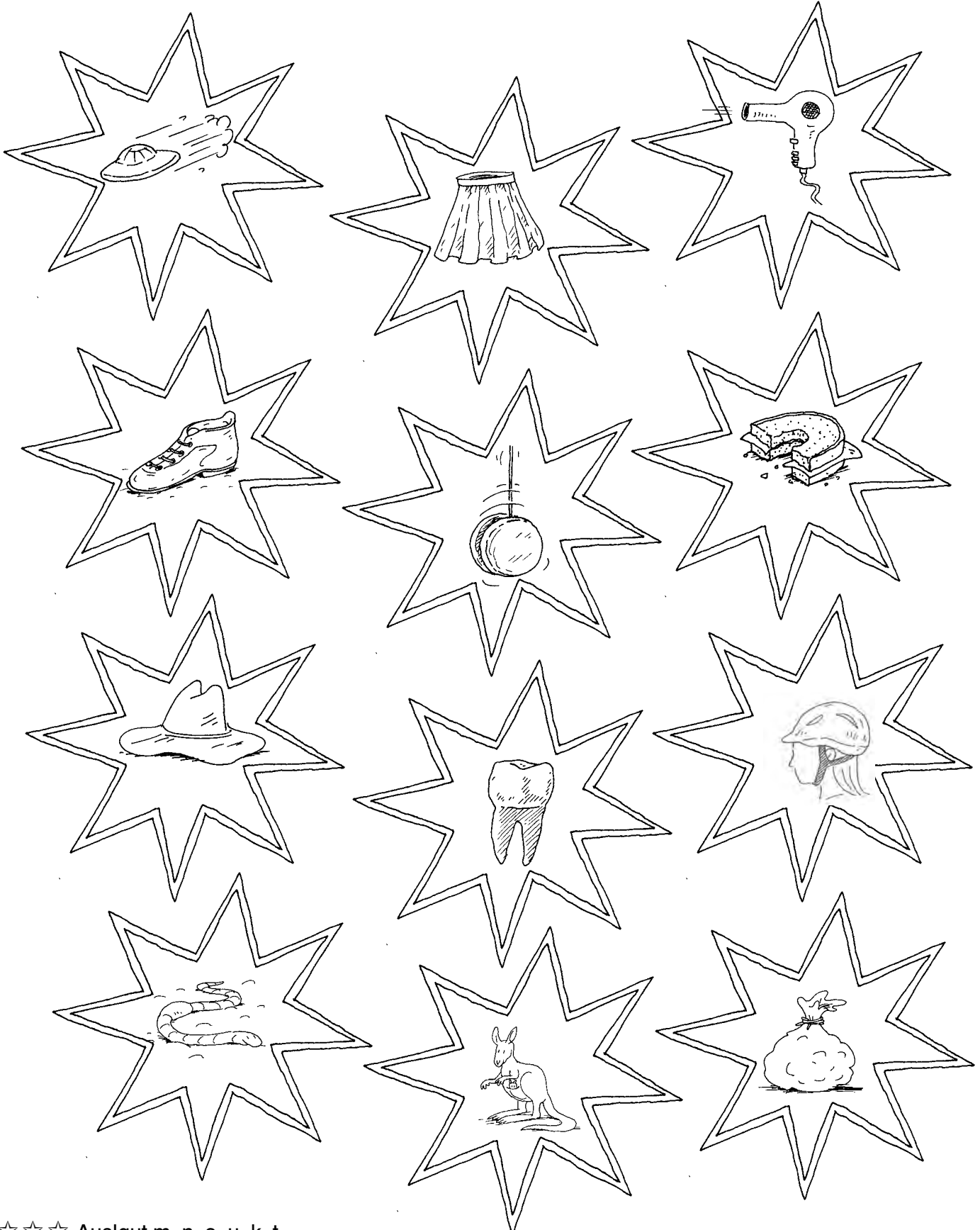




Immer zwei Wörter hören sich am Ende gleich an.



Male die Sterne in der gleichen Farbe an.



☆☆☆ Auslaut m, n, o, u, k, t