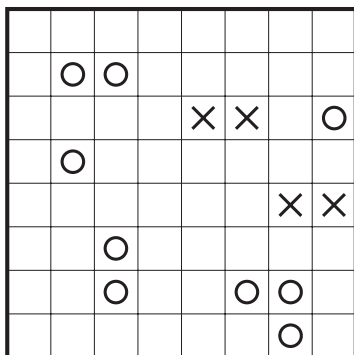
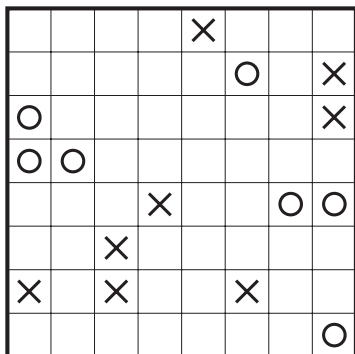


01 (8x8)



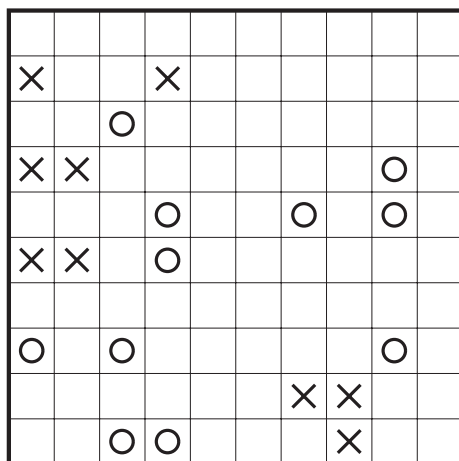
02 (8x8)



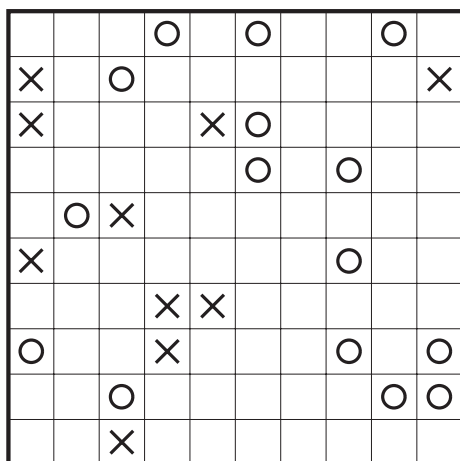
03 (8x8)

4 leicht

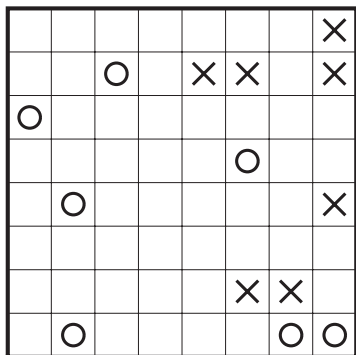
B I N O X X O



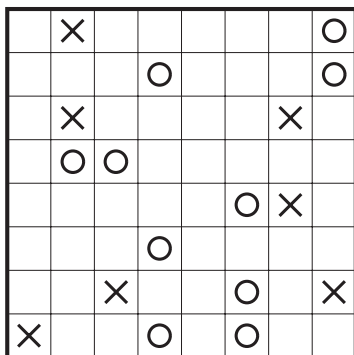
04 (10x10)



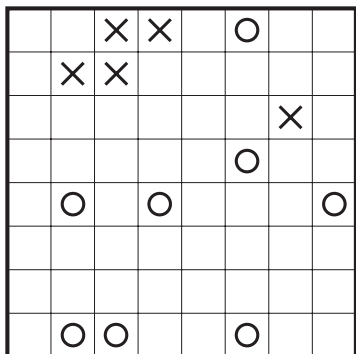
05 (10x10)



26 (8x8)



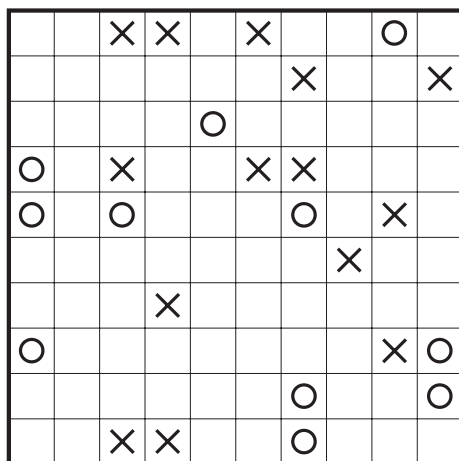
27 (8x8)



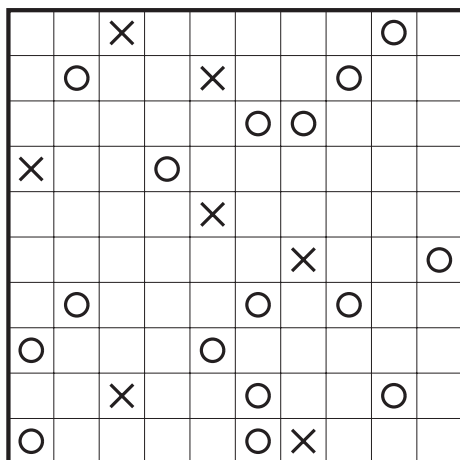
28 (8x8)

14 leicht

B I N O X X O



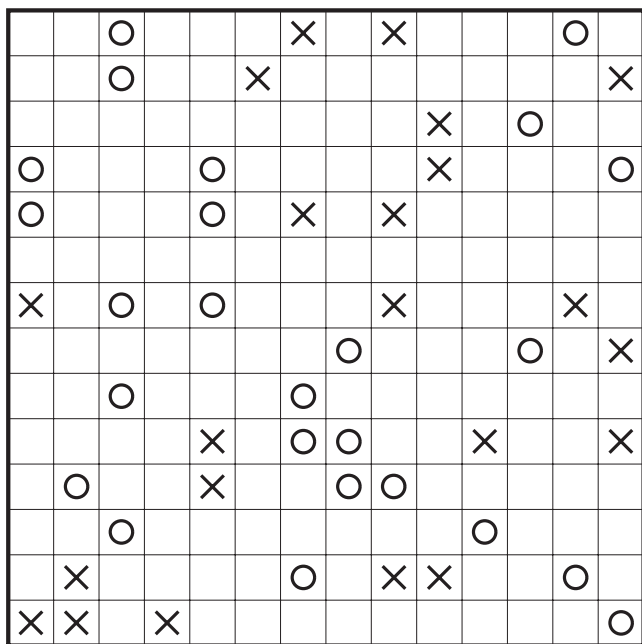
29 (10x10)



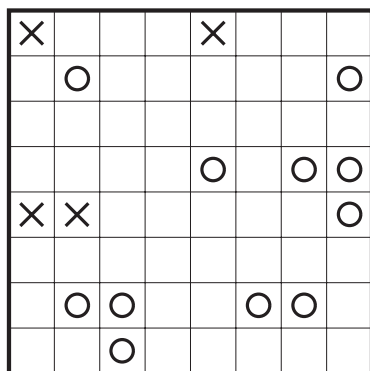
30 (10x10)

rätsel fürs auge

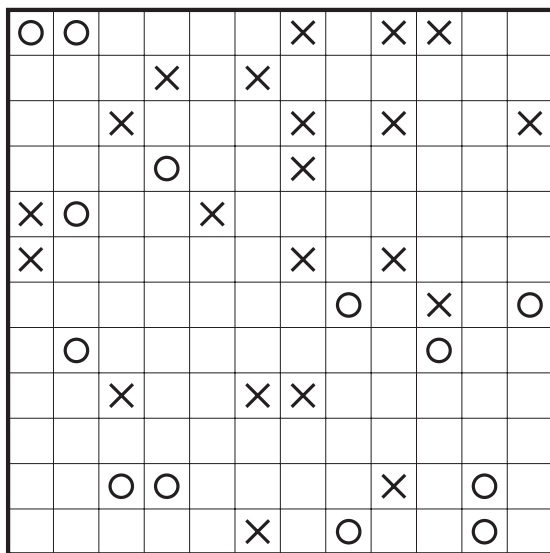
leicht 15



38 (14x14)



39 (8x8)



40 (12x12)

20 leicht

B I N O X X O

Hier sollen Inseln mit Brücken verbunden werden.

Die Regeln

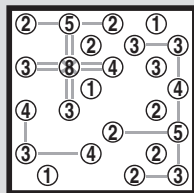
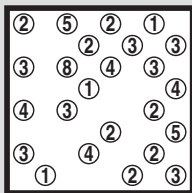
- Jeder Kreis stellt eine Insel dar. Die Zahl darin gibt an, wie viele Linien (Brücken) dort enden.
- Brücken sind nur zu horizontal oder vertikal benachbarten Inseln erlaubt.
- Inseln dürfen mit einfachen oder doppelten Brücken verbunden werden.
- Am Schluss sollen alle Inseln miteinander verbunden sein.

Nicht erlaubt sind:

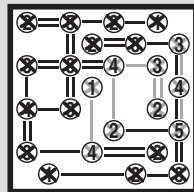
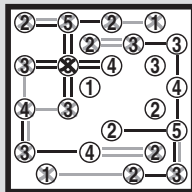
- Kreuzungen
- Diagonale Brücken
- Verbindungen mit mehr als 2 Linien
- Isolierte Inselgruppen

Beispiel

Bauen Sie die ersten Brücken zu den Inseln mit hohen Zahlen: 7 oder 8 in der Mitte, 5 oder 6 am Rand, 3 oder 4 in der Ecke. Streichen Sie «volle» Inseln.



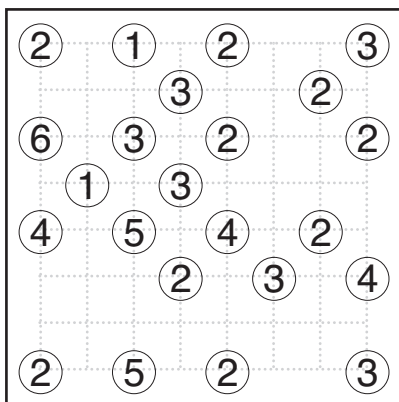
Die 1er- und 2er-Inseln helfen bei der Fortsetzung. Achten Sie beim Setzen der Brücken darauf, dass alle Inseln Anschluss an den Weg finden.



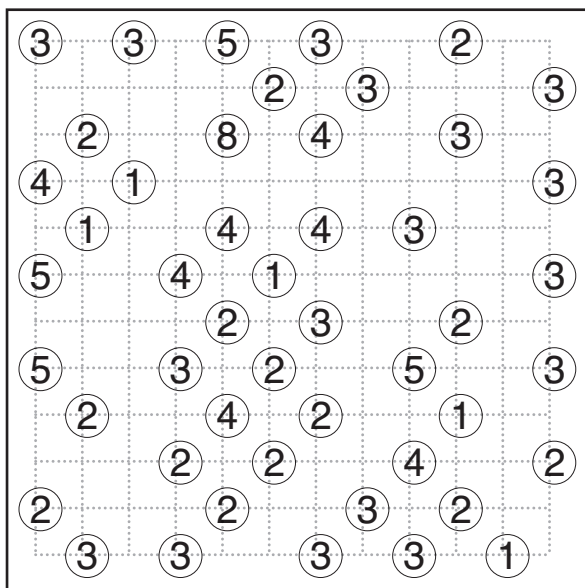
Tipp

Eine Schritt-für-Schritt-Anleitung finden Sie auf www.raetsel.ch/bruecken

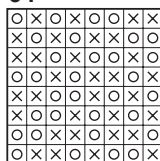
1



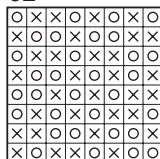
2



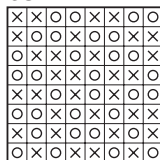
01



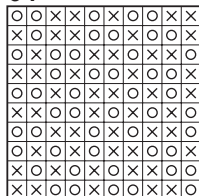
02



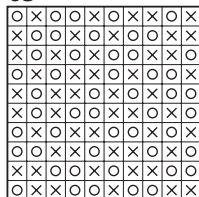
03



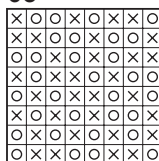
04



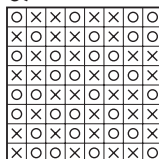
05



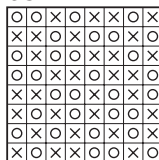
06



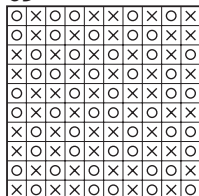
07



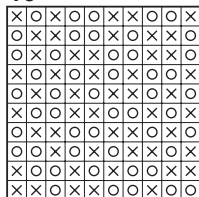
08



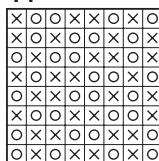
09



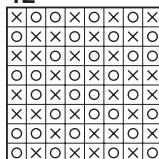
10



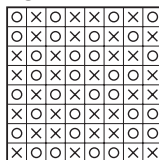
11



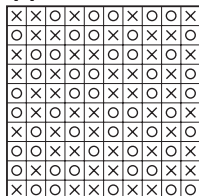
12



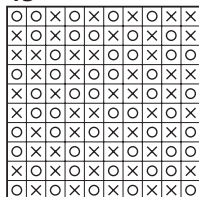
13



14



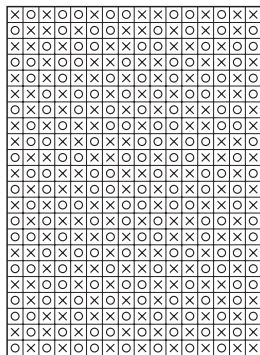
15



108

Lösungen

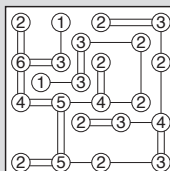




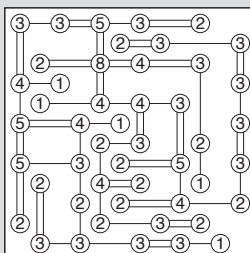
Spezial

BRÜCKEN

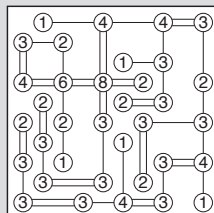
1



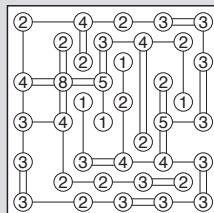
2



3



4



5

