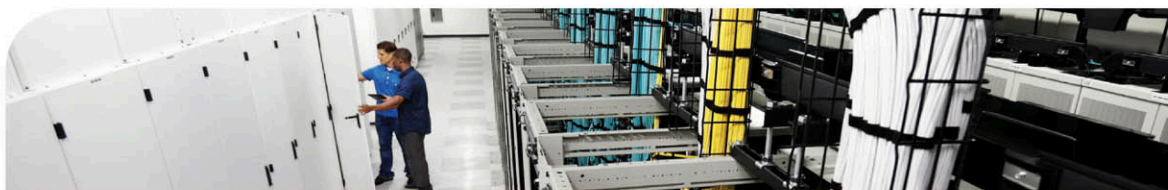




# Official Cert Guide

Learn, prepare, and practice for exam success



# Cisco CCENT/ CCNA ICND1 100-105

Academic Edition

[ciscopress.com](http://ciscopress.com)

WENDELL ODOM, CCIE® No. 1624

In addition to the wealth of updated content, this new edition includes a series of free hands-on exercises to help you master several real-world configuration and troubleshooting activities. These exercises can be performed on the CCENT/CCNA ICND1 100-105 Network Simulator Lite software included for free on the DVD or companion web page that accompanies this book. This software, which simulates the experience of working on actual Cisco routers and switches, contains the following 24 free lab exercises, covering all the topics in Part II, the first hands-on configuration section of the book:

1. Configuring Hostnames
2. Configuring Local Usernames
3. Configuring Switch IP Settings
4. Interface Settings I
5. Interface Settings II
6. Interface Settings III
7. Interface Status I
8. Interface Status II
9. Interface Status III
10. Interface Status IV
11. Setting Switch Passwords
12. Switch CLI Configuration Process I
13. Switch CLI Configuration Process II
14. Switch CLI Exec Mode
15. Switch Forwarding I
16. Switch IP Address
17. Switch IP Connectivity I
18. Switch Security I
19. Switch Security II
20. Switch Security III
21. Switch Security IV
22. Switch Security Configuration Scenario
23. Switch Interfaces and Forwarding Configuration Scenario
24. Port Security Troubleshooting Scenario

If you are interested in exploring more hands-on labs and practicing configuration and troubleshooting with more router and switch commands, see the special 50% discount offer in the coupon code included in the sleeve in the back of this book.

Windows system requirements (minimum):

- Windows 10 (32/64 bit), Windows 8.1 (32/64 bit), or Windows 7 (32/64 bit)
- 1 gigahertz (GHz) or faster 32-bit (x86) or 64-bit (x64) processor
- 1 GB RAM (32-bit) or 2 GB RAM (64-bit)
- 16 GB available hard disk space (32-bit) or 20 GB (64-bit)
- DirectX 9 graphics device with WDDM 1.0 or higher driver
- Adobe Acrobat Reader version 8 and above

Mac system requirements (minimum)

- OS X 10.11, 10.10, 10.9, or 10.8
- Intel core Duo 1.83 GHz
- 512 MB RAM (1 GB recommended)
- 1.5 GB hard disk space
- 32-bit color depth at 1024x768 resolution
- Adobe Acrobat Reader version 8 and above



# CCENT/CCNA ICND1 100-105 Official Cert Guide, Academic Edition

## Table of Contents

Cover

Title Page

Copyright Page

About the Author

Acknowledgment

Contents

Introduction

Your Study Plan

Part I: Networking Fundamentals

Chapter 1 Introduction to TCP/IP Networking

Foundation Topics

Perspectives on Networking

TCP/IP Networking Model

History Leading to TCP/IP

Overview of the TCP/IP Networking Model

TCP/IP Application Layer

HTTP Overview

HTTP Protocol Mechanisms

TCP/IP Transport Layer

TCP Error Recovery Basics

Same-Layer and Adjacent-Layer Interactions

TCP/IP Network Layer

Internet Protocol and the Postal Service

Internet Protocol Addressing Basics

IP Routing Basics

TCP/IP Link Layer (Data Link Plus Physical)

# **Table of Contents**

TCP/IP Model and Terminology  
Comparing the Original and Modern TCP/IP Models  
Data Encapsulation Terminology  
Names of TCP/IP Messages  
OSI Networking Model  
Comparing OSI and TCP/IP  
Describing Protocols by Referencing the OSI Layers  
OSI Layers and Their Functions  
OSI Layering Concepts and Benefits  
OSI Encapsulation Terminology  
Chapter Summary  
Review Questions  
Chapter Review

## **Chapter 2 Fundamentals of Ethernet LANs**

Foundation Topics  
An Overview of LANs  
Typical SOHO LANs  
Typical Enterprise LANs  
The Variety of Ethernet Physical Layer Standards  
Consistent Behavior over All Links Using the Ethernet Data Link Layer  
Building Physical Ethernet Networks with UTP  
Transmitting Data Using Twisted Pairs  
Breaking Down a UTP Ethernet Link  
UTP Cabling Pinouts for 10BASE-T and 100BASE-T  
Straight-Through Cable Pinout  
Choosing the Right Cable Pinouts  
UTP Cabling Pinouts for 1000BASE-T  
Sending Data in Ethernet Networks  
Ethernet Data-Link Protocols  
Ethernet Addressing  
Identifying Network Layer Protocols with the Ethernet Type Field  
Error Detection with FCS  
Sending Ethernet Frames with Switches and Hubs

# **Table of Contents**

Sending in Modern Ethernet LANs Using Full Duplex

Using Half Duplex with LAN Hubs

Chapter Summary

Review Questions

Chapter Review

## **Chapter 3 Fundamentals of WANs**

Foundation Topics

Leased-Line WANs

Positioning Leased Lines with LANs and Routers

Physical Details of Leased Lines

Leased-Line Cabling

Building a WAN Link in a Lab

Data-Link Details of Leased Lines

HDLC Basics

How Routers Use a WAN Data Link

Ethernet as a WAN Technology

Ethernet WANs that Create a Layer 2 Service

How Routers Route IP Packets Using Ethernet Emulation

Accessing the Internet

The Internet as a Large WAN

Internet Access (WAN) Links

Digital Subscriber Line

Cable Internet

Chapter Summary

Review Questions

Chapter Review

## **Chapter 4 Fundamentals of IPv4 Addressing and Routing**

Foundation Topics

Overview of Network Layer Functions

Network Layer Routing (Forwarding) Logic

Host Forwarding Logic: Send the Packet to the Default Router

R1 and R2's Logic: Routing Data Across the Network

R3's Logic: Delivering Data to the End Destination

# **Table of Contents**

How Network Layer Routing Uses LANs and WANs  
IP Addressing and How Addressing Helps IP Routing  
Routing Protocols  
IPv4 Addressing  
Rules for IP Addresses  
Rules for Grouping IP Addresses  
Class A, B, and C IP Networks  
The Actual Class A, B, and C IP Networks  
IP Subnetting  
IPv4 Routing  
IPv4 Host Routing  
Router Forwarding Decisions and the IP Routing Table  
A Summary of Router Forwarding Logic  
A Detailed Routing Example  
IPv4 Routing Protocols  
Other Network Layer Features  
Using Names and the Domain Name System  
The Address Resolution Protocol  
ICMP Echo and the ping Command  
Chapter Summary  
Review Questions  
Chapter Review

## **Chapter 5 Fundamentals of TCP/IP Transport and Applications**

Foundation Topics  
TCP/IP Layer 4 Protocols: TCP and UDP  
Transmission Control Protocol  
Multiplexing Using TCP Port Numbers  
Popular TCP/IP Applications  
Connection Establishment and Termination  
Error Recovery and Reliability  
Flow Control Using Windowing  
User Datagram Protocol  
TCP/IP Applications

# **Table of Contents**

Uniform Resource Identifiers  
Finding the Web Server Using DNS  
Transferring Files with HTTP  
How the Receiving Host Identifies the Correct Receiving Application  
Chapter Summary  
Review Questions  
Chapter Review

## **Part I Review**

## **Part II: Implementing Basic Ethernet LANs**

### **Chapter 6 Using the Command-Line Interface**

Foundation Topics  
Accessing the Cisco Catalyst Switch CLI  
Cisco Catalyst Switches  
Accessing the Cisco IOS CLI  
Cabling the Console Connection  
Accessing the CLI with Telnet and SSH  
User and Enable (Privileged) Modes  
Password Security for CLI Access from the Console  
CLI Help Features  
The debug and show Commands  
Configuring Cisco IOS Software  
Configuration Submodes and Contexts  
Storing Switch Configuration Files  
Copying and Erasing Configuration Files  
Chapter Summary  
Review Questions  
Chapter Review

### **Chapter 7 Analyzing Ethernet LAN Switching**

Foundation Topics  
LAN Switching Concepts  
Overview of Switching Logic  
Forwarding Known Unicast Frames  
Learning MAC Addresses

# **Table of Contents**

Flooding Unknown Unicast and Broadcast Frames

Avoiding Loops Using Spanning Tree Protocol

LAN Switching Summary

Verifying and Analyzing Ethernet Switching

Demonstrating MAC Learning

Switch Interfaces

Finding Entries in the MAC Address Table

Managing the MAC Address Table (Aging, Clearing)

MAC Address Tables with Multiple Switches

Chapter Summary

Review Questions

Chapter Review

## **Chapter 8 Configuring Basic Switch Management**

Foundation Topics

Securing the Switch CLI

Securing User Mode and Privileged Mode with Simple Passwords

Securing User Mode Access with Local Usernames and Passwords

Securing User Mode Access with External Authentication Servers

Securing Remote Access with Secure Shell

Enabling IPv4 for Remote Access

Host and Switch IP Settings

Configuring IPv4 on a Switch

Configuring a Switch to Learn Its IP Address with DHCP

Verifying IPv4 on a Switch

Miscellaneous Settings Useful in Lab

History Buffer Commands

The logging synchronous, exec-timeout, and no ip domain-lookup Commands

Chapter Summary

Review Questions

Chapter Review

## **Chapter 9 Configuring Switch Interfaces**

Foundation Topics

Configuring Switch Interfaces



# **Table of Contents**

Configuring Speed, Duplex, and Description  
Configuring Multiple Interfaces with the interface range Command  
Administratively Controlling Interface State with shutdown  
Removing Configuration with the no Command  
Autonegotiation  
Autonegotiation Under Working Conditions  
Autonegotiation Results When Only One Node Uses Autonegotiation  
Autonegotiation and LAN Hubs  
Port Security  
Configuring Port Security  
Verifying Port Security  
Port Security Violation Actions  
Port Security MAC Addresses as Static and Secure but Not Dynamic  
Chapter Summary  
Review Questions  
Chapter Review

## **Part II Review**

## **Part III: Ethernet LANs: Design, VLANs, and Troubleshooting**

### **Chapter 10 Analyzing Ethernet LAN Designs**

Foundation Topics  
Analyzing Collision Domains and Broadcast Domains  
Ethernet Collision Domains  
10BASE-T with Hub  
Ethernet Transparent Bridges  
Ethernet Switches and Collision Domains  
The Impact of Collisions on LAN Design  
Ethernet Broadcast Domains  
Virtual LANs  
The Impact of Broadcast Domains on LAN Design  
Analyzing Campus LAN Topologies  
Two-Tier Campus Design (Collapsed Core)  
The Two-Tier Campus Design  
Topology Terminology Seen Within a Two-Tier Design

# **Table of Contents**

- Three-Tier Campus Design (Core)
- Topology Design Terminology
- Analyzing LAN Physical Standard Choices
- Ethernet Standards
- Choosing the Right Ethernet Standard for Each Link
- Wireless LANs Combined with Wired Ethernet
- Home Office Wireless LANs
- Enterprise Wireless LANs and Wireless LAN Controllers
- Chapter Summary
- Review Questions
- Chapter Review

## **Chapter 11 Implementing Ethernet Virtual LANs**

- Foundation Topics
- Virtual LAN Concepts
- Creating Multiswitch VLANs Using Trunking
- VLAN Tagging Concepts
- The 802.1Q and ISL VLAN Trunking Protocols
- Forwarding Data Between VLANs
- Routing Packets Between VLANs with a Router
- Routing Packets with a Layer 3 Switch
- VLAN and VLAN Trunking Configuration and Verification
- Creating VLANs and Assigning Access VLANs to an Interface
- VLAN Configuration Example 1: Full VLAN Configuration
- VLAN Configuration Example 2: Shorter VLAN Configuration
- VLAN Trunking Protocol
- VLAN Trunking Configuration
- Implementing Interfaces Connected to Phones
- Data and Voice VLAN Concepts
- Data and Voice VLAN Configuration and Verification
- Summary: IP Telephony Ports on Switches
- Chapter Summary
- Review Questions
- Chapter Review

# **Table of Contents**

## **Chapter 12 Troubleshooting Ethernet LANs**

Foundation Topics

Perspectives on Applying Troubleshooting Methodologies

Troubleshooting on the Exams

A Deeper Look at Problem Isolation

Troubleshooting as Covered in This Book

Analyzing Switch Interface Status and Statistics

Interface Status Codes and Reasons for Nonworking States

Interface Speed and Duplex Issues

Common Layer 1 Problems on Working Interfaces

Predicting Where Switches Will Forward Frames

Predicting the Contents of the MAC Address Table

Analyzing the Forwarding Path

Analyzing Port Security Operations on an Interface

Troubleshooting Shutdown Mode and Err-disabled Recovery

Troubleshooting Restrict and Protect Modes

Analyzing VLANs and VLAN Trunks

Ensuring That the Right Access Interfaces Are in the Right VLANs

Access VLANs Not Being Defined

Access VLANs Being Disabled

Mismatched Trunking Operational States

Chapter Summary

Review Questions

Chapter Review

## **Part III Review**

## **Part IV: IP Version 4 Addressing and Subnetting**

### **Chapter 13 Perspectives on IPv4 Subnetting**

Foundation Topics

Introduction to Subnetting

Subnetting Defined Through a Simple Example

Operational View Versus Design View of Subnetting

Analyze Subnetting and Addressing Needs

Rules About Which Hosts Are in Which Subnet

# **Table of Contents**

Determining the Number of Subnets  
Determining the Number of Hosts per Subnet  
One Size Subnet Fits All Or Not  
Defining the Size of a Subnet  
One-Size Subnet Fits All  
Multiple Subnet Sizes (Variable-Length Subnet Masks)  
This Book: One-Size Subnet Fits All (Mostly)  
Make Design Choices  
Choose a Classful Network  
Public IP Networks  
Growth Exhausts the Public IP Address Space  
Private IP Networks  
Choosing an IP Network During the Design Phase  
Choose the Mask  
Classful IP Networks Before Subnetting  
Borrowing Host Bits to Create Subnet Bits  
Choosing Enough Subnet and Host Bits  
Example Design: 172.16.0.0, 200 Subnets, 200 Hosts  
Masks and Mask Formats  
Build a List of All Subnets  
Plan the Implementation  
Assigning Subnets to Different Locations  
Choose Static and Dynamic Ranges per Subnet  
Chapter Summary  
Review Questions  
Chapter Review

## **Chapter 14 Analyzing Classful IPv4 Networks**

Foundation Topics  
Classful Network Concepts  
IPv4 Network Classes and Related Facts  
The Number and Size of the Class A, B, and C Networks  
Address Formats  
Default Masks

# Table of Contents

- Number of Hosts per Network
- Deriving the Network ID and Related Numbers
- Unusual Network IDs and Network Broadcast Addresses
- Practice with Classful Networks
- Practice Deriving Key Facts Based on an IP Address
- Practice Remembering the Details of Address Classes
- Chapter Summary
- Review Questions
- Chapter Review

## Chapter 15 Analyzing Subnet Masks

- Foundation Topics
- Subnet Mask Conversion
- Three Mask Formats
- Converting Between Binary and Prefix Masks
- Converting Between Binary and DDN Masks
- Converting Between Prefix and DDN Masks
- Practice Converting Subnet Masks
- Identifying Subnet Design Choices Using Masks
- Masks Divide the Subnet's Addresses into Two Parts
- Masks and Class Divide Addresses into Three Parts
- Classless and Classful Addressing
- Calculations Based on the IPv4 Address Format
- Practice Analyzing Subnet Masks
- Chapter Summary
- Review Questions
- Chapter Review

## Chapter 16 Analyzing Existing Subnets

- Foundation Topics
- Defining a Subnet
- An Example with Network 172.16.0.0 and Four Subnets
- Subnet ID Concepts
- Subnet Broadcast Address
- Range of Usable Addresses

# **Table of Contents**

Analyzing Existing Subnets: Binary  
Finding the Subnet ID: Binary  
Finding the Subnet Broadcast Address: Binary  
Binary Practice Problems  
Shortcut for the Binary Process  
Brief Note About Boolean Math  
Finding the Range of Addresses  
Analyzing Existing Subnets: Decimal  
Analysis with Easy Masks  
Predictability in the Interesting Octet  
Finding the Subnet ID: Difficult Masks  
Resident Subnet Example 1  
Resident Subnet Example 2  
Resident Subnet Practice Problems  
Finding the Subnet Broadcast Address: Difficult Masks  
Subnet Broadcast Example 1  
Subnet Broadcast Example 2  
Subnet Broadcast Address Practice Problems  
Practice Analyzing Existing Subnets  
A Choice: Memorize or Calculate  
Chapter Summary  
Review Questions  
Chapter Review

## **Part IV Review**

## **Part V: Implementing IPv4**

### **Chapter 17 Operating Cisco Routers**

Foundation Topics  
Installing Cisco Routers  
Installing Enterprise Routers  
Cisco Integrated Services Routers  
Physical Installation  
Installing Internet Access Routers  
Enabling IPv4 Support on Cisco Router Interfaces

# **Table of Contents**

Accessing the Router CLI

Router Interfaces

Interface Status Codes

Router Interface IP Addresses

Bandwidth and Clock Rate on Serial Interfaces

Router Auxiliary Port

Chapter Summary

Review Questions

Chapter Review

## **Chapter 18 Configuring IPv4 Addresses and Static Routes**

Foundation Topics

IP Routing

IPv4 Routing Process Reference

An Example of IP Routing

Host Forwards the IP Packet to the Default Router (Gateway)

Routing Step 1: Decide Whether to Process the Incoming Frame

Routing Step 2: De-encapsulation of the IP Packet

Routing Step 3: Choosing Where to Forward the Packet

Routing Step 4: Encapsulating the Packet in a New Frame

Routing Step 5: Transmitting the Frame

Configuring IP Addresses and Connected Routes

Connected Routes and the ip address Command

The ARP Table on a Cisco Router

Routing Between Subnets on VLANs

Configuring Routing to VLANs Using 802.1Q on Routers

Configuring Routing to VLANs Using a Layer 3 Switch

Configuring Static Routes

Static Route Configuration

Static Host Routes

Static Routes with No Competing Routes

Static Routes with Competing Routes

Static Default Routes

Troubleshooting Static Routes

# **Table of Contents**

Troubleshooting Incorrect Static Routes that Appear in the IP Routing Table

The Static Route Does Not Appear in the IP Routing Table

The Correct Static Route Appears but Works Poorly

Chapter Summary

Review Questions

Chapter Review

## **Chapter 19 Learning IPv4 Routes with RIPv2**

Foundation Topics

RIP and Routing Protocol Concepts

History of Interior Gateway Protocols

Comparing IGPs

Distance Vector Basics

The Concept of a Distance and a Vector

Full Update Messages and Split Horizon

Split Horizon

Route Poisoning

Summarizing RIPv2 Features

Core RIPv2 Configuration and Verification

Configuring Core RIPv2 Features

Understanding the RIP network Command

RIP Configuration Example, with Many IP Networks

RIP Configuration Example, with One IP Network

RIPv2 Verification

Examining RIP Routes in the IP Routing Table

Comparing Routing Sources with Administrative Distance

Revealing RIP Configuration with the show ip protocols Command

Examining the Best RIP Routes Using RIP Database

Optional RIPv2 Configuration and Verification

Controlling RIP Updates with the passive-interface Command

Supporting Multiple Equal-Cost Routes with Maximum Paths

Understanding Autosummarization and Discontiguous Classful Networks

Verifying Optional RIP Features

RIPv2 Default Routes



# **Table of Contents**

Learning Default Routes Using Static Routes and RIPv2  
Learning a Default Route Using DHCP  
Troubleshooting RIPv2  
Symptoms with Missing and Incorrect network Commands  
Issues Related to Passive Interfaces  
Issues Related to auto-summary  
RIP Issues Caused by Other Router Features  
Summary of RIP Troubleshooting Issues  
Chapter Summary  
Review Questions  
Chapter Review

## **Chapter 20 DHCP and IP Networking on Hosts**

Foundation Topics  
Implementing and Troubleshooting DHCP  
DHCP Concepts  
Supporting DHCP for Remote Subnets with DHCP Relay  
Information Stored at the DHCP Server  
DHCP Server Configuration on Routers  
IOS DHCP Server Verification  
Troubleshooting DHCP Services  
DHCP Relay Agent Configuration Mistakes and Symptoms  
IOS DHCP Server Configuration Mistakes and Symptoms  
IP Connectivity from DHCP Relay Agent to DHCP Server  
LAN Connectivity Between the DHCP Client and Relay Agent  
Summary of DHCP Troubleshooting  
Detecting Conflicts with Offered Versus Used Addresses  
Verifying Host IPv4 Settings  
IP Address and Mask Configuration  
Name Resolution with DNS  
Default Routers  
IPv4 Address Types  
Review of Unicast (Class A, B, and C) IP Addresses  
IP Broadcast Addresses

# Table of Contents

IPv4 Multicast Addresses (Class D Addresses)

Comparing and Contrasting IP Address Types

Chapter Summary

Review Questions

Chapter Review

## Part V Review

## Part VI: IPv4 Design and Troubleshooting

### Chapter 21 Subnet Design

Foundation Topics

Choosing the Mask(s) to Meet Requirements

Review: Choosing the Minimum Number of Subnet and Host Bits

No Masks Meet Requirements

One Mask Meets Requirements

Multiple Masks Meet Requirements

Finding All the Masks: Concepts

Finding All the Masks: Math

Choosing the Best Mask

The Formal Process

Practice Choosing Subnet Masks

Practice Problems for Choosing a Subnet Mask

Finding All Subnet IDs

First Subnet ID: The Zero Subnet

Finding the Pattern Using the Magic Number

A Formal Process with Less Than 8 Subnet Bits

Example 1: Network 172.16.0.0, Mask 255.255.240.0

Example 2: Network 192.168.1.0, Mask 255.255.255.224

Finding All Subnets with Exactly 8 Subnet Bits

Finding All Subnets with More Than 8 Subnet Bits

Process with 916 Subnet Bits

Process with 17 or More Subnet Bits

Practice Finding All Subnet IDs

Practice Problems for Finding All Subnet IDs

Chapter Summary

# Table of Contents

Review Questions

Chapter Review

## Chapter 22 Variable-Length Subnet Masks

Foundation Topics

VLSM Concepts and Configuration

Classless and Classful Routing Protocols

VLSM Configuration and Verification

Finding VLSM Overlaps

Designing Subnetting Plans with VLSM

An Example of Finding a VLSM Overlap

Practice Finding VLSM Overlaps

Adding a New Subnet to an Existing VLSM Design

An Example of Adding a New VLSM Subnet

Chapter Summary

Review Questions

Chapter Review

## Chapter 23 IPv4 Troubleshooting Tools

Foundation Topics

Problem Isolation Using the ping Command

Ping Command Basics

Strategies and Results When Testing with the ping Command

Testing Longer Routes from Near the Source of the Problem

Using Extended Ping to Test the Reverse Route

Testing LAN Neighbors with Standard Ping

Testing LAN Neighbors with Extended Ping

Testing WAN Neighbors with Standard Ping

Using Ping with Names and with IP Addresses

Problem Isolation Using the traceroute Command

traceroute Basics

How the traceroute Command Works

Standard and Extended traceroute

Using traceroute to Isolate the Problem to Two Routers

Telnet and SSH

# **Table of Contents**

Common Reasons to Use the IOS Telnet and SSH Client

IOS Telnet and SSH Examples

Chapter Summary

Chapter Review

## **Chapter 24 Troubleshooting IPv4 Routing**

Foundation Topics

Problems Between the Host and the Default Router

Root Causes Based on a Host's IPv4 Settings

Ensure IPv4 Settings Correctly Match

Mismatched Masks Impact Route to Reach Subnet

Typical Root Causes of DNS Problems

Wrong Default Router IP Address Setting

Root Causes Based on the Default Router's Configuration

DHCP Issues

Router LAN Interface and LAN Issues

Problems with Routing Packets Between Routers

IP Forwarding by Matching the Most Specific Route

Using show ip route and Subnet Math to Find the Best Route

Using show ip route address to Find the Best Route

show ip route Reference

Routing Problems Caused by Incorrect Addressing Plans

Recognizing When VLSM Is Used or Not

Overlaps When Not Using VLSM

Overlaps When Using VLSM

Configuring Overlapping VLSM Subnets

Pointers to Related Troubleshooting Topics

Router WAN Interface Status

Filtering Packets with Access Lists

Chapter Summary

Chapter Review

## **Part VI Review**

## **Part VII: IPv4 Services: ACLs and NAT**

### **Chapter 25 Basic IPv4 Access Control Lists**

# **Table of Contents**

Foundation Topics

IPv4 Access Control List Basics

ACL Location and Direction

Matching Packets

Taking Action When a Match Occurs

Types of IP ACLs

Standard Numbered IPv4 ACLs

List Logic with IP ACLs

Matching Logic and Command Syntax

Matching the Exact IP Address

Matching a Subset of the Address with Wildcards

Binary Wildcard Masks

Finding the Right Wildcard Mask to Match a Subnet

Matching Any/All Addresses

Implementing Standard IP ACLs

Standard Numbered ACL Example 1

Standard Numbered ACL Example 2

Troubleshooting and Verification Tips

Practice Applying Standard IP ACLs

Practice Building access-list Commands

Reverse Engineering from ACL to Address Range

Chapter Summary

Review Questions

Chapter Review

## **Chapter 26 Advanced IPv4 Access Control Lists**

Foundation Topics

Extended Numbered IP Access Control Lists

Matching the Protocol, Source IP, and Destination IP

Matching TCP and UDP Port Numbers

Extended IP ACL Configuration

Extended IP Access Lists: Example 1

Extended IP Access Lists: Example 2

Practice Building access-list Commands

# **Table of Contents**

Named ACLs and ACL Editing  
Named IP Access Lists  
Editing ACLs Using Sequence Numbers  
Numbered ACL Configuration Versus Named ACL Configuration  
ACL Implementation Considerations  
Troubleshooting with IPv4 ACLs  
Analyzing ACL Behavior in a Network  
ACL Troubleshooting Commands  
Example Issue: Reversed Source/Destination IP Addresses  
Steps 3D and 3E: Common Syntax Mistakes  
Example Issue: Inbound ACL Filters Routing Protocol Packets  
ACL Interactions with Router-Generated Packets  
Local ACLs and a Ping from a Router  
Router Self-Ping of a Serial Interface IPv4 Address  
Router Self-Ping of an Ethernet Interface IPv4 Address  
Chapter Summary  
Review Questions  
Chapter Review

## **Chapter 27 Network Address Translation**

Foundation Topics  
Perspectives on IPv4 Address Scalability  
CIDR  
Private Addressing  
Network Address Translation Concepts  
Static NAT  
Dynamic NAT  
Overloading NAT with Port Address Translation  
NAT Configuration and Troubleshooting  
Static NAT Configuration  
Dynamic NAT Configuration  
Dynamic NAT Verification  
NAT Overload (PAT) Configuration  
NAT Troubleshooting

# Table of Contents

Chapter Summary

Review Questions

Chapter Review

Part VII Review

## Part VIII: IP Version 6

### Chapter 28 Fundamentals of IP Version 6

Foundation Topics

Introduction to IPv6

The Historical Reasons for IPv6

The IPv6 Protocols

IPv6 Routing

IPv6 Routing Protocols

IPv6 Addressing Formats and Conventions

Representing Full (Unabbreviated) IPv6 Addresses

Abbreviating and Expanding IPv6 Addresses

Representing the Prefix Length of an Address

Calculating the IPv6 Prefix (Subnet ID)

Finding the IPv6 Prefix

Working with More-Difficult IPv6 Prefix Lengths

Chapter Summary

Review Questions

Chapter Review

### Chapter 29 IPv6 Addressing and Subnetting

Foundation Topics

Global Unicast Addressing Concepts

A Brief Review of Public and Private IPv4 Addresses

Review of Public IPv4 Addressing Concepts

Review of Private IPv4 Addressing Concepts

Public and Private IPv6 Addresses

The IPv6 Global Routing Prefix

Address Ranges for Global Unicast Addresses

IPv6 Subnetting Using Global Unicast Addresses

Deciding Where IPv6 Subnets Are Needed

# **Table of Contents**

The Mechanics of Subnetting IPv6 Global Unicast Addresses

Listing the IPv6 Subnet Identifier

List All IPv6 Subnets

Assign Subnets to the Internetwork Topology

Assigning Addresses to Hosts in a Subnet

Unique Local Unicast Addresses

Subnetting with Unique Local IPv6 Addresses

The Need for Globally Unique Local Addresses

Chapter Summary

Review Questions

Chapter Review

## **Chapter 30 Implementing IPv6 Addressing on Routers**

Foundation Topics

Implementing Unicast IPv6 Addresses on Routers

Static Unicast Address Configuration

Configuring the Full 128-Bit Address

Enabling IPv6 Routing

Verifying the IPv6 Address Configuration

Generating a Unique Interface ID Using Modified EUI-64

Dynamic Unicast Address Configuration

Special Addresses Used by Routers

Link-Local Addresses

Link-Local Address Concepts

Creating Link-Local Addresses on Routers

Routing IPv6 with Only Link-Local Addresses on an Interface

IPv6 Multicast Addresses

Local Scope Multicast Addresses

Solicited-Node Multicast Addresses

Anycast Addresses

Miscellaneous IPv6 Addresses

IPv6 Addressing Configuration Summary

Chapter Summary

Review Questions



# **Table of Contents**

Chapter Review

## **Chapter 31 Implementing IPv6 Addressing on Hosts**

Foundation Topics

The Neighbor Discovery Protocol

Discovering Routers with NDP RS and RA

Discovering Addressing Info for SLAAC with NDP RS and RA

Discovering Neighbor Link Addresses with NDP NS and NA

Discovering Duplicate Addresses Using NDP NS and NA

NDP Summary

Dynamic Configuration of Host IPv6 Settings

Dynamic Configuration Using Stateful DHCP and NDP

Differences Between DHCPv6 and DHCPv4

DHCPv6 Relay Agents

Using Stateless Address Auto Configuration

Building an IPv6 Address Using SLAAC

Combining SLAAC with NDP and Stateless DHCP

Troubleshooting IPv6 Addressing

Verifying Host IPv6 Connectivity from Hosts

Verifying Host Connectivity from Nearby Routers

Chapter Summary

Review Questions

Chapter Review

## **Chapter 32 Implementing IPv6 Routing**

Foundation Topics

Connected and Local IPv6 Routes

Rules for Connected and Local Routes

Example of Connected IPv6 Routes

Examples of Local IPv6 Routes

Static IPv6 Routes

Static Routes Using the Outgoing Interface

Static Routes Using Next-Hop IPv6 Address

Example Static Route with a Global Unicast Next-Hop Address

Example Static Route with a Link-Local Next-Hop Address

# **Table of Contents**

- Static Default Routes
- Static IPv6 Host Routes
- Floating Static IPv6 Routes
- Default Routes with SLAAC on Router Interfaces
- Troubleshooting Static IPv6 Routes
- Troubleshooting Incorrect Static Routes That Appear in the IPv6 Routing Table
- The Static Route Does Not Appear in the IPv6 Routing Table
- Chapter Summary
- Review Questions
- Chapter Review

## **Part VIII Review**

## **Part IX: Network Device Management**

### **Chapter 33 Device Management Protocols**

- Foundation Topics
- System Message Logging (Syslog)
- Sending Messages in Real Time to Current Users
- Storing Log Messages for Later Review
- Log Message Format
- Log Message Severity Levels
- Configuring and Verifying System Logging
- The debug Command and Log Messages
- Network Time Protocol (NTP)
- Setting the Time and Timezone
- Implementing NTP Clients, Servers, and Client/Server Mode
- NTP Using a Loopback Interface for Better Availability
- Analyzing Topology Using CDP and LLDP
- Examining Information Learned by CDP
- Configuring and Verifying CDP Itself
- Implementing Link Layer Discovery Protocol
- Chapter Summary
- Review Questions
- Chapter Review

### **Chapter 34 Device Security Features**

# Table of Contents

Foundation Topics

Securing IOS Passwords

Encrypting Older IOS Passwords with service password-encryption

Encoding the Enable Passwords with Hashes

Interactions Between Enable Password and Enable Secret

Making the Enable Secret Truly Secret with a Hash

Improved Hashes for Cisco's Enable Secret

Hiding the Passwords for Local Usernames

Cisco Device Hardening

Configuring Login Banners

Securing Unused Switch Interfaces

Controlling Telnet and SSH Access with ACLs

Firewalls

Typical Location and Uses of Firewalls

Security Zones

Chapter Summary

Review Questions

Chapter Review

## Chapter 35 Managing IOS Files

Foundation Topics

Managing Cisco IOS Images and Upgrades

The IOS File System

Upgrading IOS Images

Copying a New IOS Image to a Local IOS File System Using TFTP

Verifying IOS Code Integrity with MD5

Copying Images with FTP

Copying Images with SCP

The Cisco IOS Software Boot Sequence

The Configuration Register

How a Router Chooses Which OS to Load

Verifying the IOS Image Using the show version Command

Password Recovery

The General Ideas Behind Cisco Password Recovery/Reset

# **Table of Contents**

- A Specific Password Reset Example
- Managing Configuration Files
- Copying and Erasing Configuration Files
- Traditional Configuration Backup and Restore with the copy Command
- Alternatives for Configuration Backup and Restore
- Erasing Configuration Files
- Initial Configuration (Setup Mode)
- Chapter Summary
- Review Questions
- Chapter Review

## **Chapter 36 IOS License Management**

- Foundation Topics
- IOS Packaging
- IOS Images per Model, Series, and per Software Version/Release
- Original Packaging: One IOS Image per Feature Set Combination
- New IOS Packaging: One Universal Image with All Feature Sets
- IOS Software Activation with Universal Images
- The Future: Cisco ONE Licensing
- Managing Software Activation with Cisco License Manager
- Manually Activating Software Using Licenses
- Example of Manually Activating a License
- Showing the Current License Status
- Adding a Permanent Technology Package License
- Right-to-Use Licenses
- Chapter Summary
- Review Questions
- Chapter Review

## **Part IX Review**

## **Part X: Final Review**

### **Chapter 37 Final Review**

- Advice About the Exam Event
- Learn the Question Types Using the Cisco Certification Exam Tutorial
- Think About Your Time Budget Versus Number of Questions

# **Table of Contents**

A Suggested Time-Check Method  
Miscellaneous Pre-Exam Suggestions  
Exam-Day Advice  
Reserve the Hour After the Exam in Case You Fail  
Exam Review  
Practice Subnetting and Other Math-Related Skills  
Take Practice Exams  
Practicing Taking the ICND1 Exam  
Advice on How to Answer Exam Questions  
Taking Other Practice Exams  
Find Knowledge Gaps Through Question Review  
Practice Hands-On CLI Skills  
Review Mind Maps from Part Review  
Do Labs  
Assess Whether You Are Ready to Pass (and the Fallacy of Exam Scores)  
Study Suggestions After Failing to Pass  
Other Study Tasks  
Final Thoughts

## **Part XI: Appendixes**

Appendix A: Numeric Reference Tables  
Appendix B: CCENT/CCNA ICND1 100-105 Exam Updates

## **Glossary**

A  
B  
C  
D  
E  
F  
G  
H  
I

# Table of Contents

K  
L  
M  
N  
O  
P  
Q  
R  
S  
T  
U  
V  
W  
Z

Index

## DVD Appendixes

Appendix C: Answers to the Review Questions

Appendix D: Practice for Chapter 14: Analyzing Classful IPv4 Networks

Appendix E: Practice for Chapter 15: Analyzing Subnet Masks

Appendix F: Practice for Chapter 16: Analyzing Existing Subnets

Appendix G: Practice for Chapter 21: Subnet Design

Appendix H: Practice for Chapter 22: Variable-Length Subnet Masks

Appendix I: Practice for Chapter 25: Basic IPv4 Access Control Lists

Appendix J: Practice for Chapter 28: Fundamentals of IP Version6

Appendix K: Practice for Chapter 30: Implementing IPv6 Addressing on  
Routers

Appendix L: Mind Map Solutions

Appendix M: Study Planner

Appendix N: Classless Inter-domain Routing

Appendix O: Route Summarization

# **Table of Contents**

Appendix P: Implementing Point-to-Point WANs

Appendix Q: Topics from Previous Editions

Appendix R: Exam Topics Cross Reference

Where are the companion content files?