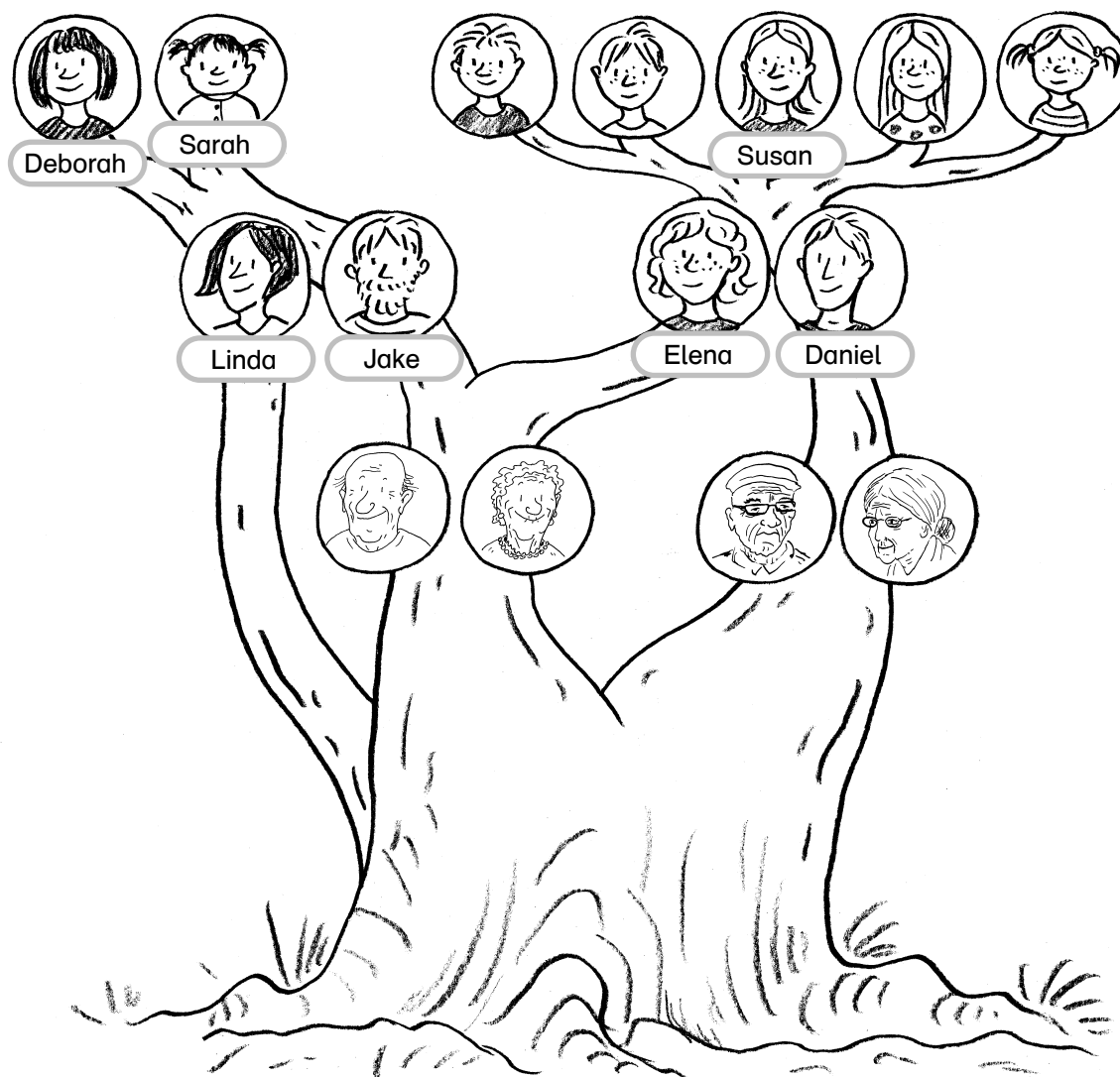


family tree

- ① Look at Susan's family tree and complete the sentences.

Susan's family tree



This is Susan's family _____. She has got a big family.

Her _____ are Daniel and Elena. She has got two _____

and two brothers. Jake is her _____. He is married to Linda.

So Liza has two _____, Sarah and Deborah. Her _____

is very old. But they have a lot of fun together. Her _____ makes the best chocolate cake in town.

- ② Make a family tree of your family on an extra sheet of paper. The text of exercise 1 might help you.
- ③ Look at your family tree and write sentences about your family under the picture or on an extra sheet of paper. Who is your brother, what's the name of your mother? Write at least six sentences.

school things 1

① school things – match the parts of the words and write the words down.

glue

exercise

felt

pencil

bag

case

stick

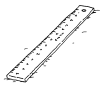
book

school

tip

sharpener

② What's in your school bag? Draw six things and write them down in English and German.



ruler – Lineal

③ Find the words.

1.



2.



3.



4.



5.



6.



7.



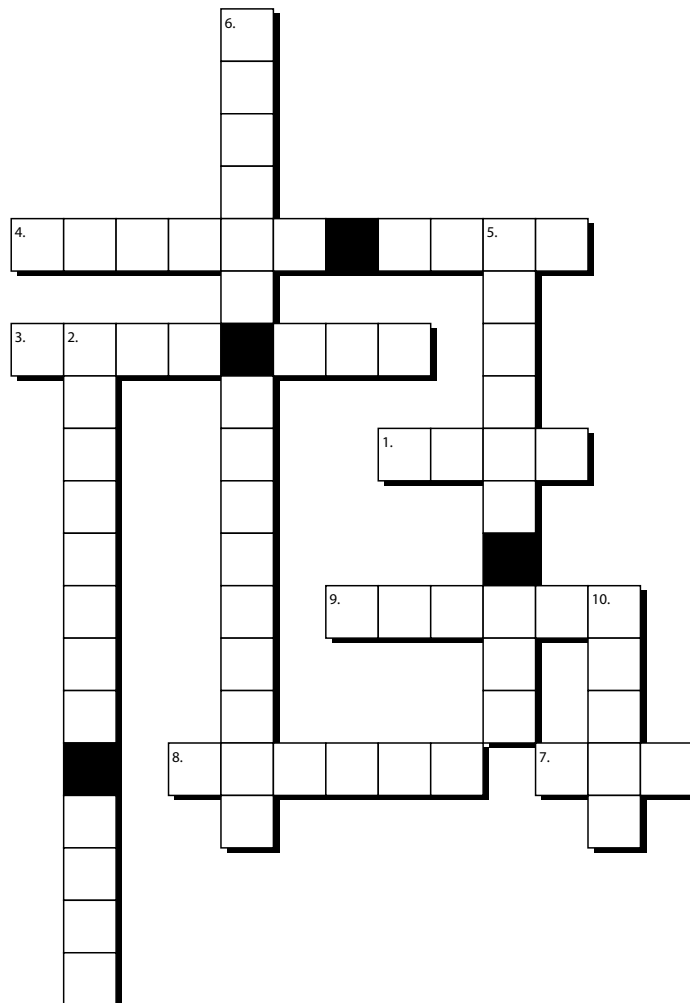
8.



9.

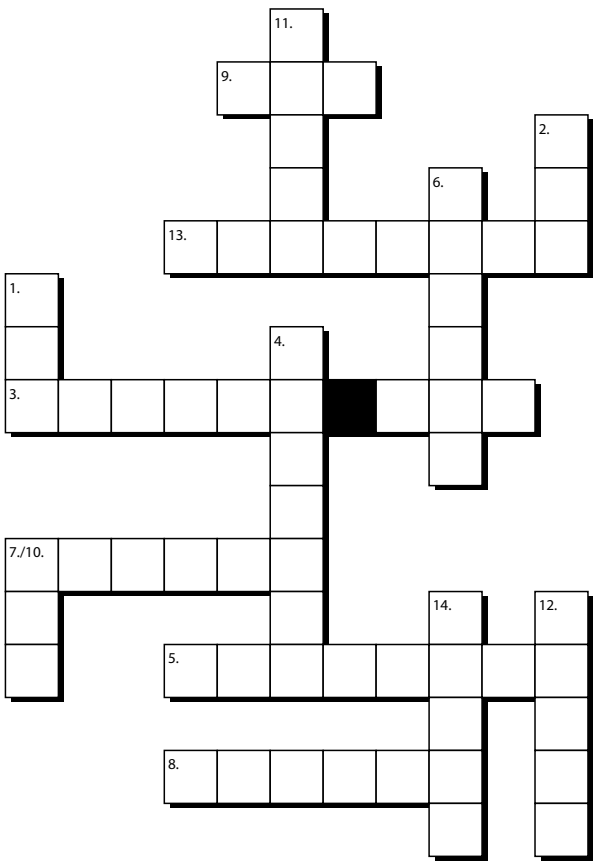


10.



my pets and animals 3

⑥ What is it in English? Write it down.

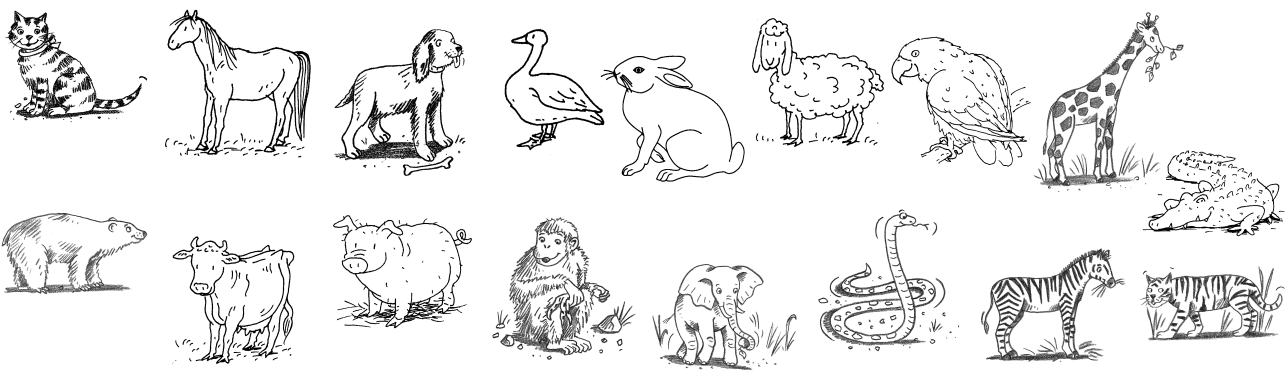


- 1. Hund
- 2. Katze
- 3. Meerschweinchen
- 4. Hamster
- 5. Schildkröte
- 6. Hase
- 7. Papagei
- 8. Wellensittich
- 9. Kuh
- 10. Schwein
- 11. Pferd
- 12. Zebra
- 13. Elefant
- 14. Tiger

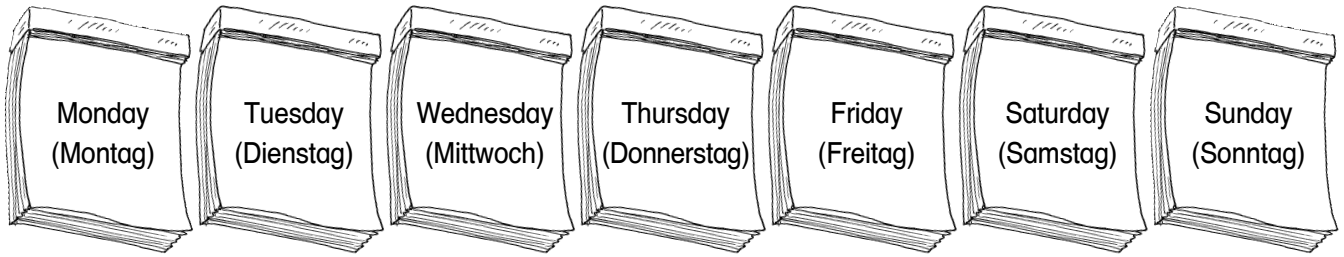
⑦ What kinds of animals live on the farm? What can you see in the zoo?

Think of animals and pets and write down as many words as you can. The pictures below might help you.

in the zoo	on the farm



days and months – Übersichtsseite



January (Januar)



February (Februar)



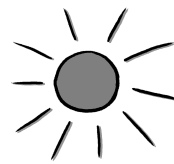
March (März)



April (April)



May (Mai)



June (Juni)



July (Juli)



August (August)



September (September)



October (Oktober)



November (November)



December (Dezember)